



ADDENDUM NUMBER ONE
(Addendum to RFP)
CCA RFP# ARENA1SIGN
ARENA SIGNAGE PROVISION & INSTALLATION
The Classic Center Arena
Athens, Georgia

Date: January 18, 2023

From: Richard Sawyer, CCA Project Procurement Director

To: Potential Respondents

This Addendum forms a part of the **Request for Proposal No. ARENA1SIGN** and modifies the RFP as described below. Official answers, changes and clarifications are **underlined**. **This Addendum consists of four (4) pages.**

A. The following questions received by the question deadline are answered below: (Official answers are underlined, below):

1. The signage schedule does not have a count for several of the signs with a drawing detail (EE-01, RI-01, **SR-01**, MO-01, SI-01, RR-01, and AI-01). Can you provide the count for each of these **seven** sign types? **It is the signage vendor's responsibility to identify the code required signage locations and counts.**

3. FULL EVALUATION AND SCOPE OF CODE SIGNAGE AND WAYFINDING IS THE RESPONSIBILITY OF THE SIGNAGE MANUFACTURER. PROVIDE COMPLETE LIST AND PRICING FOR SIGNAGE.

2. The signage schedule for type SIO-02 indicates "TWO" sections. Do you want a quantity of two, or only one sign that shows two sections on one sign as shown on the sign detail? **This is describing one sign that identifies two sections (on each side) as shown in the sign detail on A71-81**

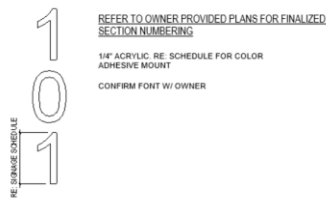
3. There are discrepancies between the Signage Plans, Signage Schedule, and Signage Details as noted on attachment (LINK BELOW). Will a revised set of plans be forthcoming?
https://www.dropbox.com/s/bt0a7grearjb6i4/081722_ASI%20014_CLASSIC%20CENTER_SIGNAGE%20PACKAGE-%20BASIS%20FOR%20QUESTION%233.pdf?dl=0

See markup links below.

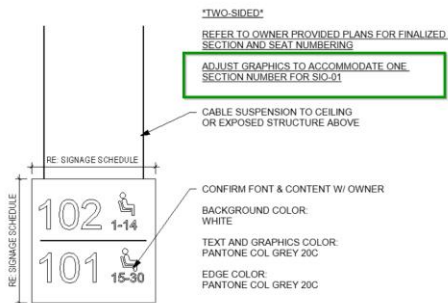
https://www.dropbox.com/s/x9rpb9r0485993f/081722_ASI%20014_CLASSIC%20CENTER_SIGNAGE%20PACKAGE-%20BASIS%20FOR%20QUESTION%233_PW%20Comments.pdf?dl=0

https://www.dropbox.com/s/2n8piu1beiwsbhr/011623_CLASSIC%20CENTER_SIGNAGE%20PACKAGE-%20REVISED.pdf?dl=0

4. **Is the Classic Center Authority tax exempt? Yes, both the CCA and Athens-Clarke County Unified Government are tax exempt entities in Georgia.**
5. The signage schedule has a few sign types that don't have a drawing detail. Please provide graphic for SIL-01 **detail provided as "SI-01" should be "SIL-01" on sheet A71-81 (see revision below), SIO-01 refer to SIO-01 detail and note about revising sign for SIO-02 locations (see revision below), OI-01 this is overhead identification for the bar TBD by owner pending any sponsorship opportunity and DL-02 this is overhead identification for the Center Club TBD by owner pending any sponsorship opportunity.**



SIL-01 SECTION IDENTIFICATION WALLMOUNT
 1" = 1'-0"



SIO-02 - SECTION IDENTIFICATION OVERHEAD
 1" = 1'-0"

6. The signage schedule does not have a count for several of the signs with a drawing detail (EE-01, RI-01, , MO-01, SI-01, RR-01, and AI-01). Can you provide the count for each of these six sign types? **See response to question #1 above**
7. Shall we assume a letter count on items DL-02 for purposes of pricing? Schedule indicates names TBD. **See response to question #5 above.**
8. Brackets – Are there any specs governing the type of brackets desired for the flagmount signs? **Sign specifications are vendor responsibility. This package is for design intent only.**
9. Hanging signs - Are there any specs governing the suspension poles/bars (materials, color, anchoring method, etc)?
Sign specifications are vendor responsibility. This package is for design intent only.
10. Is there exterior signage we can price? (ex. monument, parking, stadium name, parking/wayfinding, etc.) **This is scope to be designed by signage vendor in coordination with Classic Center. Exterior renderings provided by Perkins&Will can be used for reference to determine signage locations. Intent of signage shown is to be placeholders and have not been discussed in detail.**

Page A71-81 Interior Signage Details Wayfinding

11. Sign type SR-01- Section Railing Sign- We have a drawing, but these are not listed on Signage Message Schedule to determine the Quantity needed. **See previous answers**
12. Sign type SI-01- Section ID Wall Mount- We have a drawing, but these are not listed on Signage Message Schedule to determine the Quantity needed. **See previous answers**

Page A71-80 Interior Signage Details -Code Signage

13. Sign types SI-01, RR-01, RI-01, MO-01, AI-01,EE-01 all have drawings, but are not shown on the Signage message schedule to determine the Quantity needed for each. There are room call outs on the site plans, but nothing details which and how many signs go to each location. This is typically handled by the designer/architect. **See previous answers**

Page A71-60 and A71-61 Signage Schedules

14. The following sign types are listed on the signage message schedules, but we do not have corresponding drawings for:
15. Sign type DL-02 Dimensional Typography- need drawing **See previous answers**

16. Sign type SIL-01 Section ID Wall Mount- need drawing *See previous answers*

17. Sign type- SIO-01- Section ID Overhead- One Section- need drawing *See previous answers*

18. Sign type- OI-01- Overhead Directional Wayfinding- need drawing *See previous answers*

END OF ADDENDUM #1